



SafePath[®] IOT

UNIFIED SAFETY AND MONITORING FOR ALL CONNECTED DEVICES THROUGH A **SINGLE PLATFORM.**



All types of IoT devices for all types of families.



GPS Trackers

Track nearly any device! Collect real-time location information on kids, pets, bikes, bags.



Elderly Wearables

Give independence to elderly family members with fall detection, vitals monitoring, and interactive reminders for smart watches and wearables.



Children's Wearables

Keep track and protect young children with safety benefits for smart watches and wearables.



Pet Lifestyle

Keep furry friends safe, active and healthy with wearables designed to track their location, physical activity and health information.

IOT FEATURES

Centralized services for all of your customer's IoT devices in **one** simple app.*

Real-Time Tracking

Locate children, elderly family members, pets, and valuables in real time as they travel to different locations.

Safety Areas & Automatic Notifications

Create virtual fences around designated areas and receive automatic notifications when an IoT device enters or exits the area.

Personalized Reports

Access to daily, weekly and monthly activity history, app usage highlights, parenting tips and more with SafePath's reporting tools.

Activity History & Timeline

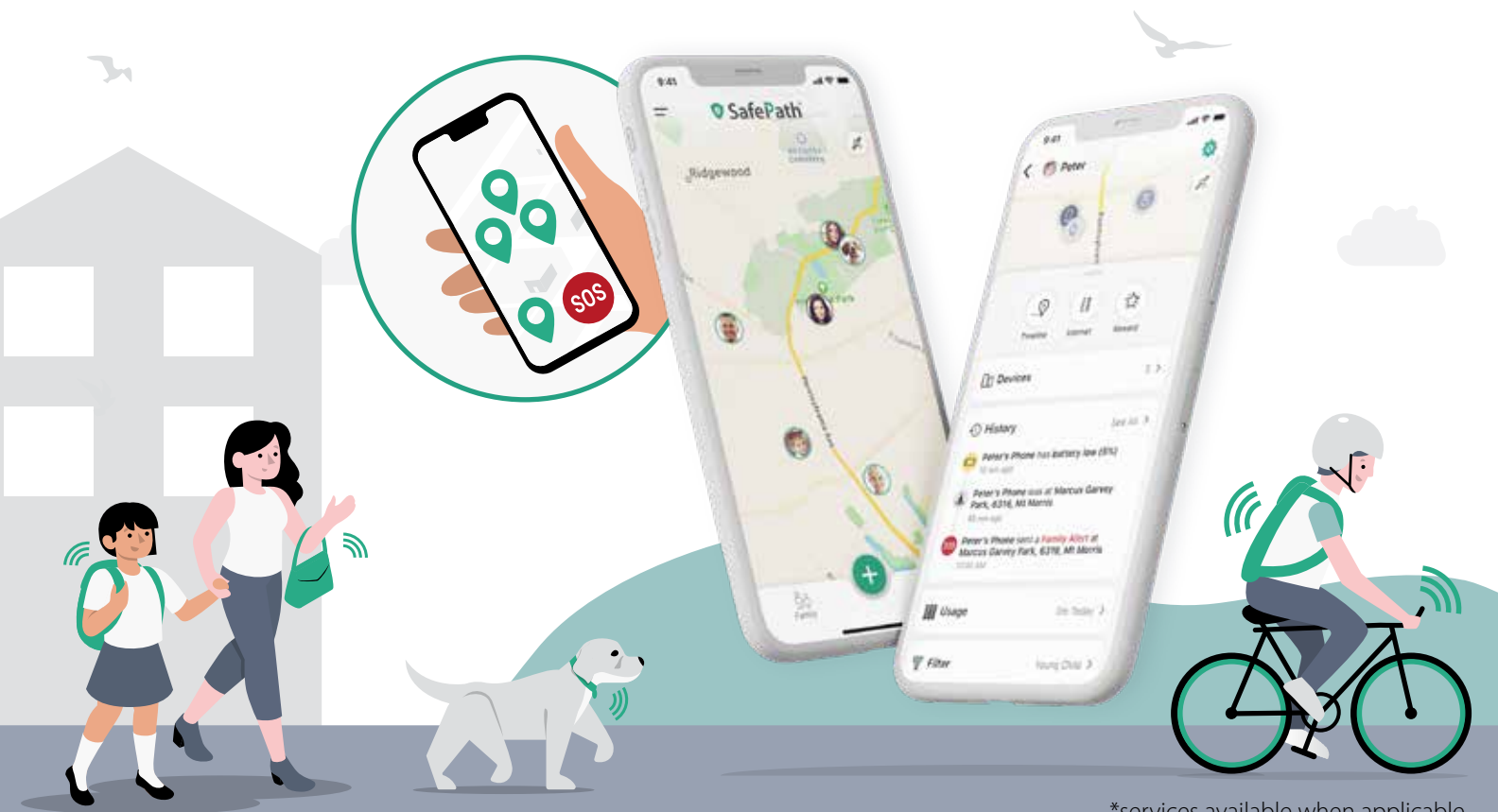
Safeguard your children, elderly family members and valuables by knowing where they have been and the path they took to get there and back.

Emergency Alerts

Send emergency alerts with location information from your tracker and wearables to all family members that are connected to SafePath.

Gamification

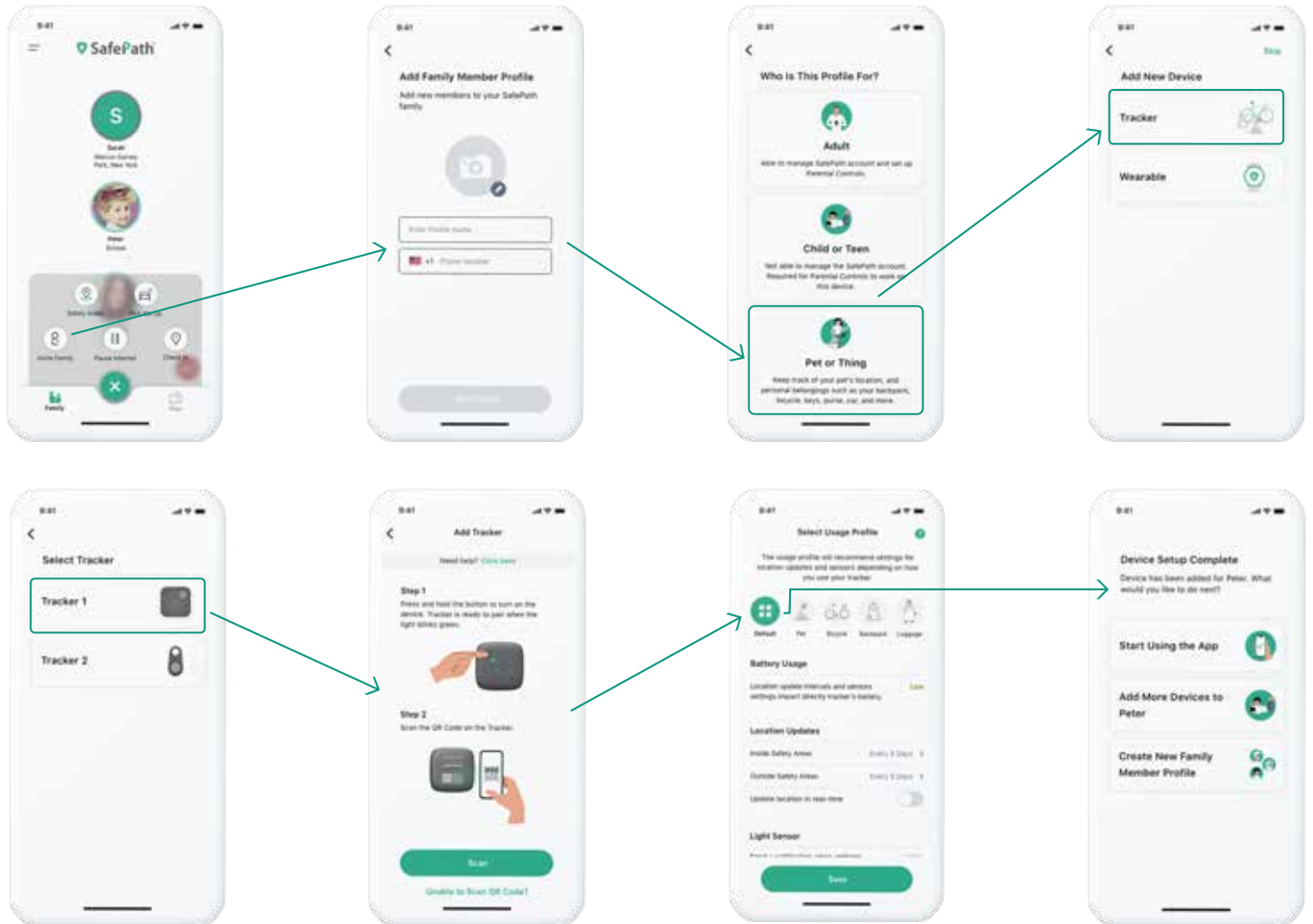
Increase app engagement with gamification elements that celebrate good behaviors with rewards, like extra screen time for YouTube.



*services available when applicable

CUSTOMER ONBOARDING

Fewer steps and less time to **onboard** your customers' devices.



SAFEPATH IOT ARCHITECTURE

SafePath is the quickest way to bring **connected devices** into the market, enabling **fast, scalable and flexible integrations**.



SafePath IoT SDK

- As operationally secure as it is efficient.
- Standards-based LwM2M interface.
- Available as Android AOSP and Linux SDK.



SafePath Cloud-to-OEM Cloud API

- U.S.-based development and OEM support centers.
- Expert OEM/ODM integration processes refined over 37 years.

